

# Cytokeratin-based CTC counting unrelated to clinical follow up

Ludmilla Thomé Domingos Chinen<sup>1,2</sup>, Fernanda Machado de Carvalho<sup>1</sup>, Bruna Maria Malagoli Rocha<sup>1,2</sup>, Caroline Motta Aguiar<sup>1,2</sup>, Emne Ali Abdallah<sup>1,2</sup>, Daniel Campanha<sup>2</sup>, Natália Breve Mingues<sup>1</sup>, Thiago Bueno de Oliveira<sup>2</sup>, Macello Sampaio Maciel<sup>3</sup>, Gustavo Marchioro Cervantes<sup>3</sup>, Aldo L.A. Dettino<sup>2</sup>, Fernando Augusto Soares<sup>1</sup>, Patrizia Paterlini-Bréchet<sup>4</sup>, Marcello Ferretti Fanelli<sup>2</sup>

<sup>1</sup>Department of Anatomic Pathology, <sup>2</sup>Department of Clinical Oncology, <sup>3</sup>Department of Image, AC Camargo Cancer Hospital, São Paulo, Brazil; <sup>4</sup>Unité INSERM U807, Faculté de Médecine Paris Descartes, Paris, France

## ABSTRACT

**Background:** Circulating tumor cells (CTCs) have been reported to be a relevant prognostic biomarker in metastatic patients. However, their clinical use and impact is still under debate. We have thus comparatively and kinetically assessed two CTC detection methods according to the patient's clinical follow up.

**Methods:** CTC counting and characterization were repeatedly performed during follow up in a patient with metastatic undifferentiated non-small cell lung cancer by using cytokeratin (CK)-dependent immunomagnetic separation (Miltenyi) and CK-independent, size-based isolation [isolation by size of tumor cells (ISET)] (Rarecells).

**Results:** Comparison between the two methods showed a parallel increase of CTC detected by ISET and worsening of the clinical status, while CK-dependent CTC numbers were decreasing, misleadingly suggesting a response to treatment. ISET results were in agreement with the clinical follow up showing Circulating tumor microemboli (CTM) and CTC expressing a mesenchymal marker with absence of epithelial markers.

**Conclusions:** This case report study shows the interest of a comparative and kinetic analysis of different methods for CTCs detection combined with their evaluation according to the clinical follow up. Our results should open up an area for future research and validation in larger clinical cohorts.

## KEYWORDS

Circulating tumor cells (CTCs); circulating tumor microemboli (CTM); lung cancer; immunomagnetic separation; isolation by size of tumor cells (ISET)

*J Thorac Dis 2013;5(5):593-599. doi: 10.3978/j.issn.2072-1439.2013.09.18*

## Introduction

Circulating Tumor Cells (CTCs) represent a biomarker which is also potentially involved in development of metastasis, thus their identification and characterization may bring hope for improved follow up in patients with cancer. However, despite a relevant number of studies and investments aimed to change the clinical practice and improve patients' follow up through the use of this new marker, the clinical benefit of CTC is still under debate. A major role in this setting is played by the method used

to extract CTC from blood, as we know now that CTC are not only extremely rare but also heterogeneous, including CTC with epithelial markers, with mesenchymal markers, and CTC in epithelial to mesenchymal transition (EMT) having both types of markers. Thus, it is conceivable that methods using CTC capture based on epithelial markers, such as cytokeratins (CKs) and EpCAM, may lose the most malignant mesenchymal CTCs thus decreasing the clinical value of the whole test. In this context, we have assessed two different approaches for CTC detection, one "CK-based" and the other antigen-independent "cell size-based", according to the clinical follow up in a patient with metastatic lung cancer.

Lung cancer is a common cause of cancer death worldwide, expected to account for 26% of all female cancer deaths and 29% of all male cancer deaths (1). Despite advances in early detection and treatment, non-small-cell lung cancer (NSCLC) is often diagnosed at an advanced stage and has a poor prognosis. In this context, a reliable test for counting and analysis of CTCs, believed to be crucial in cancer dissemination and

Corresponding to: Ludmilla Thomé Domingos Chinen, PhD. Rua Professor Antônio Prudente 211, 1º subsolo/Prédio Hilda Jacob Liberdade/São Paulo, SP-Brazil 01509-010, Brazil. Email: ltdchinen@gmail.com.

Submitted Sep 12, 2013. Accepted for publication Sep 17, 2013.  
Available at [www.jthoracdis.com](http://www.jthoracdis.com)

ISSN: 2072-1439

© Pioneer Bioscience Publishing Company. All rights reserved.

**Table 1.** Time schedule of blood collection.

Time schedule	CT-scan	Blood collection
August 2012	Mass in the right lower lung lobe	–
September 18 <sup>th</sup> , 2012	–	1 <sup>st</sup> blood collection (Miltenyi and ISET) followed by the first cycle chemotherapy (C1-carbo + taxol)
October 9 <sup>th</sup> 2012	–	2 <sup>nd</sup> blood collection (Miltenyi and ISET*) followed by the second cycle chemotherapy (C2-carbo + taxol)
October 30 <sup>th</sup> 2012	–	3 <sup>rd</sup> blood collection (Miltenyi and ISET) followed by the third cycle chemotherapy (C3-carbo + taxol)
November 2012	New lung lesion, pleural progression, multiple liver nodules	–
January 9 <sup>th</sup> 2013—death; *ISET sample not suitable for analysis.		

metastasis, could represent a tool with prognostic and predictive significance, also providing a “liquid” biopsy for personalized anticancer therapy.

The aim of this work was to perform a kinetic study of CTCs in a patient with metastatic undifferentiated NSCLC, assessing two non-automated techniques for CTC detection according to the patient’s follow up and cancer evolution.

## Materials and methods

### Patient

For CTC analysis, blood samples (2×8 mL) were collected from a patient with metastatic undifferentiated NSCLC at the A.C. Camargo Cancer Hospital in São Paulo, Brazil, after written, informed consent from patient and approval by the Local Research Ethics Committee (protocol number: 1367-10). Patient clinical-pathological parameters were obtained from the medical records.

Samples were collected in EDTA tubes following time schedule shown in Table 1. After blood collection, tubes were stored at room temperature for subsequent analysis by Carcinoma Cell Enrichment and Detection kit with MACS technology (MiltenyiBiotec, BergischGladbach, Germany) within 24 hours, according to information on data sheet (Miltenyi Biotec, catalog number 030-060-101) (8 mL of blood) and by isolation by size of epithelial tumor cells (ISET) (Rarecell Diagnostics, Paris, France) according to manufacturer instructions (8 mL of blood).

**CTC ENRICHMENT** The Carcinoma Cell Enrichment and Detection kit with MACS technology selects CTCs by immunomagnetic separation with anti-pan CK antibody that recognizes CK 7, 8, 18 and 19, according to manufacturer procedures and methodology described by Nadal *et al.* (2). CTCs were defined by the following criteria: CK+ cell with high

nucleo-cytoplasmic ratio and larger than leukocytes (3).

ISET methodology isolates intact CTCs from blood through direct filtration without using antibodies, thus exploiting the larger size of CTC as compared with leukocytes, and uses polycarbonate membrane with 8-μm-diameter cylindrical pores. We used procedures of this platform and CTC definition criteria according to previous detailed reports (4). Circulating tumor microemboli (CTM) were defined as groups or clusters of tumor cells containing three or more distinct nuclei and previously identified in metastatic cancer patients (5).

Images of results obtained with the two techniques were taken using a light microscope (Axioskop 40-Carl Zeiss, Germany) coupled to a digital camera (Sony Cyber-shot DSC-S75) at 100× magnification.

Both methods used here are for research use only. However, ISET underwent technical (6,7), and clinical validation (8) in particular, showing the prognostic value of ISET in patients with early and late stage Non Small Cells Lung Cancer.

### Immunocytochemistry

Immunohistochemistry studies were feasible only on CTC isolated by ISET. ISET membrane spots were cut out and used for single or dual-color immunocytochemistry for CTC identification and characterization according to the manufacturer’s instructions.

To evaluate and distinguish CTCs from White Blood Cells (WBCs) contaminants, besides morphology analysis, dual-color immunocytochemistry (DAB+/Permanent Red; Dako<sup>TM</sup>) was carried out using the following antibodies: anti-CK7 (1:50; clone OV-TL 12/30, Dako<sup>TM</sup>) and anti-CD45 (1:100; clone 2B11+ PD7/26, Dako<sup>TM</sup>), a WBC surface marker; and anti-CK8 (1:50; clone NCL-L-CK8-TS1, Novocastra<sup>TM</sup>). A dual-color immunocytochemistry approach was also used to evaluate EMT on CTCs. The antibodies used were anti- Pan CK (1:1,000;

clone AE1/AE3, Dako), anti-E-cadherin (1:100; clone 36, BD Bioscience) and anti-vimentin (1:1,500; clone V9, Dako).

Single immunocytochemistry (DAB+/Dako™) was performed to evaluate N-Cadherin expression (1:50; clone 6G11; Dako™), a marker of EMT and CD34 expression, a marker of endothelial cells (1:100; clone QBEnd 10, Dako™).

Negative and positive controls were performed for each IHC staining (Figures S1,S2).

These tests were performed at baseline blood collection (before first cycle of chemotherapy) and before the third cycle of chemotherapy. For CTCs counting, eight spots were used (corresponding to 8 mL of blood) including 4 stained with hematoxylin-eosin and the others stained by ICC as described by Krebs *et al.* (7).

## Results

A 68-year-old woman presented in August 2012 with a history of persistent chest pain in the right hemithorax and a lump measuring about 3 cm in the right inframammary region.

Computed Tomography (CT) scan of the chest showed a cavitated mass approximately 8.7 cm × 7 cm, in the right lower lung lobe, with pleural effusion and nodular thickening in the mid-basal portion of the pleura, and infiltration of 6<sup>th</sup> right anterior rib. Furthermore, enlarged paratracheal and infracarinal lymph nodes (approximately 1.6 cm), paraseptal and centrilobular emphysema as well as basal ground-glass opacities were found.

Subsequently, a biopsy of the chest wall was carried out and revealed undifferentiated NSCLC. Immunostaining was positive for Pan CK AE1/AE3, CK7 and p63 (focally) and negative for CK20, TTF-1, calretinin, napsin A, CD31, CD34, S-100 and FLI-1. Positron emission tomography-CT (PET-CT) revealed stage IV disease (T4, N2, M1; metastasis in non-regional lymph nodes). It showed paratracheal, fracarinal and periesofagic lymphadenopathy.

Concerning the blood samples collected before the first cycle of chemotherapy (See Methods), the immunomagnetic separation (Miltenyi kit) showed 26.7 CTC/mL (total 214 in 8 mL) with high expression of CK (Figure 1); while the ISET approach showed 735/mL CTC (total estimated: 588 in 8 mL).

Carboplatin and paclitaxel treatment were initiated. After one cycle of chemotherapy, a new CTCs analysis was performed, but the blood sample for ISET was not suitable for analysis (because of coagulation due to lack of blood agitation after collection), thus we could perform the immunomagnetic separation (Miltenyi kit) method only which showed 13.7 CTC/mL (total 110 in 8 mL) with high expression of CK and morphology as in the first analysis, possibly suggesting a response to treatment. However, the number of CTCs was still high and could represent a potential minimal residual disease (9,10); Events that were

observed during the time course of patient disease.

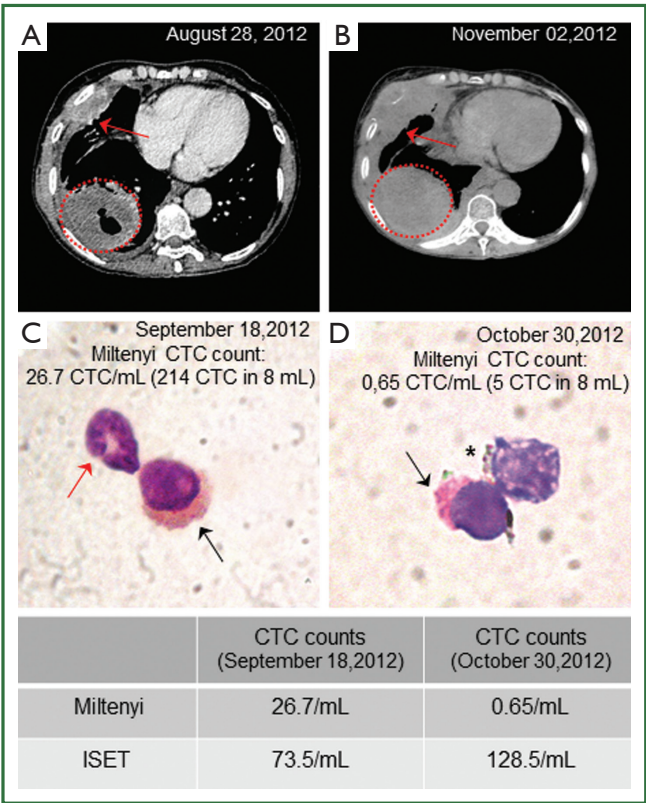
Despite the decreased number of CTC detected by Miltenyi, the imaging studies showed a progression of the disease. Figure 1A,B, shows that, although there was no significant difference in tumor size in a 4-month interval between diagnosis and the end of the third cycle of chemotherapy, a new lung lesion measuring 8 mm and pleural progression were identified, demonstrating disease progression according to Response Evaluation Criteria In Solid Tumors (RECIST) (11). This CT scan performed after the third cycle of chemotherapy (4-month interval since the discovery of the lung disease) also revealed progression of disease to liver (multiple nodules up to 3 cm) and retroperitoneal lymph nodes.

Before the third cycle of chemotherapy, we performed another CTCs analysis using the ISET platform, as well as with the immunomagnetic Miltenyi method. The immunomagnetic separation (Miltenyi kit) showed 0.65 CTC/mL (total 5 CTC in 8 mL) with heterogeneous expression of CK and a different expression pattern than the previous analysis (Figure 1D); While the ISET approach showed 128/mL CTC (total estimated 1,024 CTC in 8 mL) which was consistent with the clinical worsening of the disease (imaging progression). CTC morphology was similar by using both methods, although the counts per 8 mL of blood collection were different, the counts by ISET being consistently higher than the counts by immunomagnetic labeling (Miltenyi).

Results obtained by ISET before the third cycle of chemotherapy also demonstrated the presence of CTM (Figure 2). These CTMs have been reported to be associated with potential advantages for CTC survival and proliferation and to be responsible for micrometastatic lesions in distant organs (12). This finding was in accordance with the patient's disease progression. As circulating endothelial cells can be present in patients with cancer and can be isolated by ISET creating a bias in CTCs counting, we performed a staining with anti-endothelial marker (CD34). No signal was detectable with the CD34 marker on the filters obtained from the patient while the positive and negative controls were satisfactory (data not shown). We thus concluded that the counting of CTCs obtained by ISET is accurate.

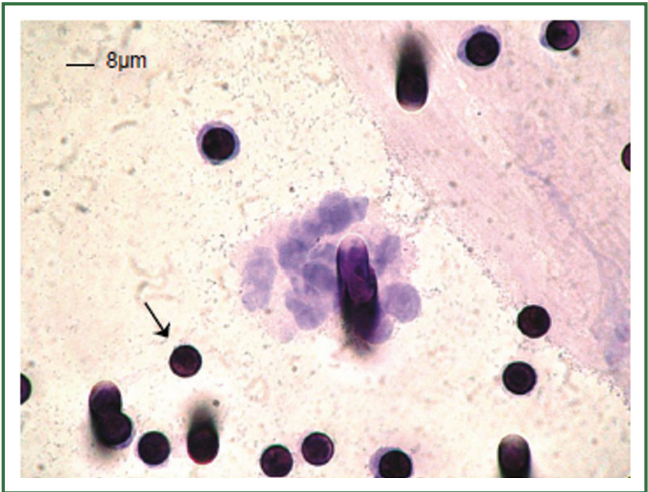
Figure 3A shows cells isolated by ISET, stained with hematoxylin-eosin on the membrane, whereas panels B and C show the distinction between CTCs and WBCs which were identified by a positive red CD45 staining. However, CTCs did not present immunopositivity for specific anti-CKs labelling, showing a different pattern of protein expression as compared with the patient primary tumor that was positive for CK7 and Pan CK (clone AE1/AE3). Furthermore, this result is in accordance with low number and heterogeneous CK+ CTCs found by the immunomagnetic Miltenyi's methodology.

The pattern of CKs expression observed could be explained

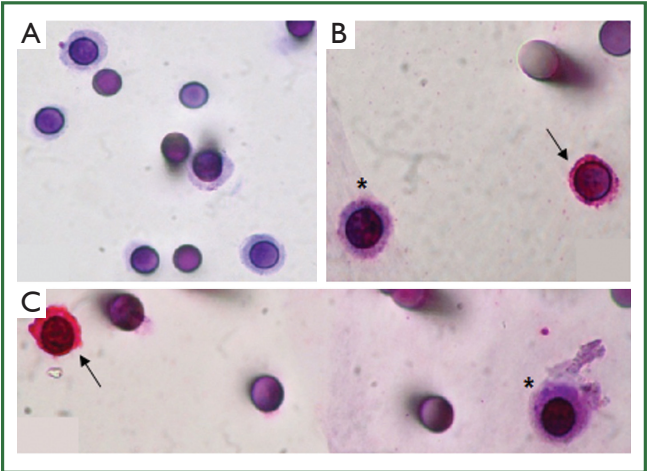


**Figure 1.** Computed Tomography (CT) scan of the patient chest and Circulating tumor cells (CTC) from an undifferentiated non-small-cell lung cancer patient, isolated by immunomagnetic Miltenyi separation with anti-pan cytokeratin (CK) antibody. (A) and (B) show lung images from CT scan taken in August and November, 2012. Red circles indicate the primary tumor (approximately 8.7 cm × 7 cm) and red arrow indicates pleural progression. (C) and (D) show CTCs positively stained for CK (black arrow). White Blood Cells (WBCs) were negatively stained for CK and presented different size and nuclear morphology from CTCs (red arrow). Cell not expressing CK and with morphology similar to CTC (asterisk).

by a partial or incomplete EMT process, in which cells lose cell-to-cell adhesion and adopt some mesenchymal features, such as expression of vimentin and N-Cadherin, related to their increasing potential of invasion (13). For this reason, immunocytochemistry for N-Cadherin was performed and a weak staining was observed in the majority of CTCs isolated by ISET before the third cycle of chemotherapy (Figure 4A,B) pointing out the presence of a CTC population with mesenchymal features. We decided to look for other markers of EMT (E-cadherin and Vimentin) both in the first (before the first cycle of chemotherapy) and third (before the third cycle of chemotherapy) blood samples which were treated by ISET. E-cadherin expression was never found while vimentin expression was observed in double-staining with pan CK. Vimentin was highly expressed in the majority of CTCs from the

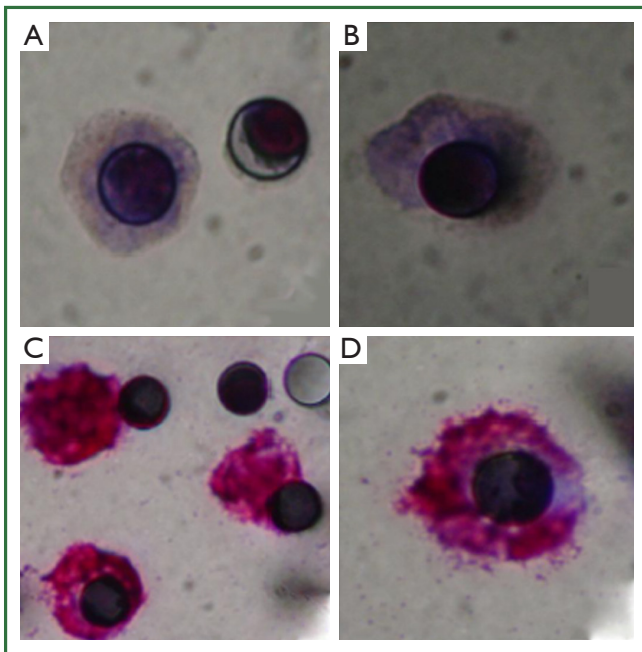


**Figure 2.** Circulating tumor microembolus (CTM) from undifferentiated non-small-cell lung cancer patient detected after two cycles of chemotherapy. Patient's blood sample was submitted to ISET filtration and CTM were identified, by hematoxylin-eosin staining, as groups or clusters of tumor cells containing three or more distinct nuclei. The black arrow shows the 8 μm pore in the ISET membrane.



**Figure 3.** Immunocytochemical characterization of CTCs isolated by ISET from undifferentiated non-small-cell lung cancer patient. (A) Cells on ISET membrane stained with hematoxylin-eosin. (B,C) Dual-color immunocytochemistry on ISET membrane, WBC was positively stained by CD45 (black arrow) whereas CTCs demonstrate negative staining for CKs and CD45 (asterisks).

first blood collection (Figure 4C,D), but there were some CTCs without any expression of this marker. Vimentin was moderately expressed in all CTCs isolated from the third blood collection. On the other hand, Pan CK expression, an epithelial marker, was negative in CTC isolated by ISET (first and third blood samples).



**Figure 4.** Immunocytochemistry on ISET membrane for Epithelial to Mesenchymal Transition Markers. (A,B). CTCs show a weak staining for N-cadherin by single immunocytochemistry. (C,D). Dual-color immunocytochemistry on ISET membrane. CTCs positively stained for Vimentin and negative staining for pan-CK. Images were taken using a light microscope (Axioskop 40-Carl Zeiss, Germany) coupled to digital camera (Sony Cyber-shot DSC-S75) at 100× magnification.

After three cycles of ineffective chemotherapy, the patient's disease gradually progressed and she was initiated on palliative second-line chemotherapy with pemetrexed. This evolution was in agreement with CTC results (increased number and EMT) obtained by the antigen independent CTC isolation performed using ISET but not with CTC results (decreased number) obtained by the CK-based CTC isolation performed using Miltenyi.

## Discussion

In the field of CTC, the issue of "CTC heterogeneity" is critical. It is well known that CTC may lose epithelial antigens and undergo EMT and that tumor cells in EMT are thought to have more "stem" characteristics including more invasive potential and self-renewal capacity (14). It is also known that tumor cells in EMT represent a relevant part of the CTC population in patients with lung cancer (7). Surprisingly, methods which only detect and count epithelial tumor cells and cannot identify CTC in EMT have been shown as having a prognostic value. In fact, Cell Search<sup>TM</sup> analysis showed that 21% of evaluated 101 NSCLC patients were positive for CTCs ( $\geq 5$  CTCs/7.5 mL blood, range, 0-149) and patients with 5 or more CTCs per 7.5 mL blood

exhibited significantly worse overall survival (OS) compared to those patients with less than 5 CTCs (median OS, 4.3 versus 8.1 months respectively,  $P < 0.001$ ) (7). However, only 9 out of 101 patients, including 60 with metastases, had 5 or more CTCs per 7.5 mL and the mean survival time difference was of few months. Thus, practically, there is no at present clinical prognostic use of CTC enumeration, with an established cut-off level, for lung cancer patients.

In this setting, we planned to follow a single patient with metastatic lung cancer and compare CTC enumeration with both an "epithelial-antigen dependent" and an "epithelial-antigen independent" method to count CTC and analyzing the change in CTC number according to the clinical follow up. To our knowledge, this is the first study which has been designed to use clinical follow up and kinetic variation of the number of CTCs studied by two different approaches in order to obtain clues to identify the most accurate CTC method to be used in the follow up of patients with lung cancer.

Our results obtained using the "epithelial-antigen dependent" detection and counting of CTC showed a decrease in number of CTC during the disease course, suggesting a possible positive response to treatment. However, the patient's clinical conditions worsened in parallel. Of note is the fact that the last analysis by this technique showed CTC with different pattern of CK expression besides cells morphologically similar to CTC not expressing CK (Figure 1D).

In contrast, our results obtained using the "epithelial-antigen independent" ISET methodology, which was performed in parallel, showed an increasing number of CTC which was consistent with the observed worsening of clinical conditions and absence of response to treatment. According to previous reports using ISET we thought that these discrepancy could be related to CTC with EMT phenotype which are not detected by a technique based on CK expression, since progressive loss of epithelial and gain of mesenchymal markers are characteristics of the EMT process (14).

EMT has been associated with self-renewal and survival of CTCs with higher metastatic potential (15). Our results obtained with the ISET platform demonstrated a population of CTC with weak expression of N-Cadherin, a protein that contributes to EMT by stimulating invasive signaling in tumor cells (16). We also observed non-expression of E-cadherin in CTC collected by ISET at two different time-points. Qi *et al.* (17) showed N-Cadherin as a key protein in transendothelial migration of melanoma cells. In human prostate carcinoma, the overexpression of N-cadherin was associated with loss of E-cadherin and correlated with high Gleason score as well as with systemic and metastatic recurrence after surgery (18).

Hou *et al.* (12) demonstrated heterogeneous expression of N-Cadherin in CTC and CTM isolated by ISET platform from lung cancer patients which was described as a partial EMT

phenotype. In our study, besides expression of N-Cadherin, another evidence for EMT was the fact that CTCs did not show CK7 or CK8 expression. This finding is in agreement with Krebs *et al.* (7) who found epithelial marker negative subpopulation of CTC isolated by ISET from chemo-naïve, (stages IIIA to IV) NSCLC patients. Vimentin expression in CTC found in this study is in agreement with findings published by other authors (19), who also observed CTC expressing only vimentin or co-expressing it with keratin antigens at a very low or undetectable level in CTC from 6 patients with NSCLC. Bonnomet *et al.* (20) observed, using an experimental tumor model, that tumor cells in vascular tumoral emboli all expressed vimentin as also tumoral emboli in the lungs. However, macrometastases displayed heterogenous vimentin expression, as seen in the primary xenografts.

These findings strongly suggest that a relevant number of CTC in our patient were in EMT and detected by ISET but not detected by the method based on CK expression (Miltenyi).

In our study, the invasive potential of CTC was also shown by the presence of CTM detected by the ISET platform, but not by the immunomagnetic Miltenyi method. Presence of CTM in lung cancer patients was also mentioned by Hou *et al.* (12): ISET method showed heterogeneous expression of epithelial and mesenchymal markers in the evaluated CTM whereas Cell Search™ technique found no evidence of CTM.

The relation between CTCs and tumor progression is supported by CTC dissemination and genetic mutations in CTC related to resistance to treatment (15). Maheswaran *et al.* (21) isolated CTCs from metastatic NSCLC patient carrying a resistance mutation to EGFR inhibitors, and demonstrated the presence of the mutation in pretreatment tumor-biopsy specimens which correlated with a reduced progression-free survival (7.7 vs. 16.5 months,  $P < 0.001$ ).

To summarize, in our case, the number of CTC detected by immunomagnetic labeling (Miltenyi) decreased and the number of CTC counted by ISET increased while the patient clinical conditions evolved to unfavorable prognosis. This may suggest that CTC in EMT were resistant to chemotherapy and continued to expand under therapy while the “epithelial” more differentiated CTC were sensitive to the therapy as their number decreased.

We concluded that the method which only identifies epithelial cells does not allow to assess the effect of the therapy and brings a CTC counting bias. At least for patients with lung cancer, counting CTC with a methodology only based on epithelial antigens and drawing conclusions on the response of patients to therapy seems unreliable.

In conclusion, by studying a single case of a patient with lung cancer and few months of survival after cancer diagnosis, we have obtained data suggesting that an unbiased enumeration of CTC taking into account their heterogeneity and variable expression

of epithelial markers is more susceptible to be consistent with the clinical follow up. The method ISET for CTC detection allows to isolate CTCs independently from their expression of epithelial antigens. Our data are in agreement with previous reports (8) and suggest that ISET could provide relevant results when used for CTC counting in follow up of patients with lung cancer. More studies are now clearly needed providing validation of our data in larger clinical cohorts studies.

## Acknowledgements

Fundação de Amparo à Pesquisa do Estado de São Paulo (FAPESP) for financial support.

*Disclosure:* The authors declare no conflict of interest.

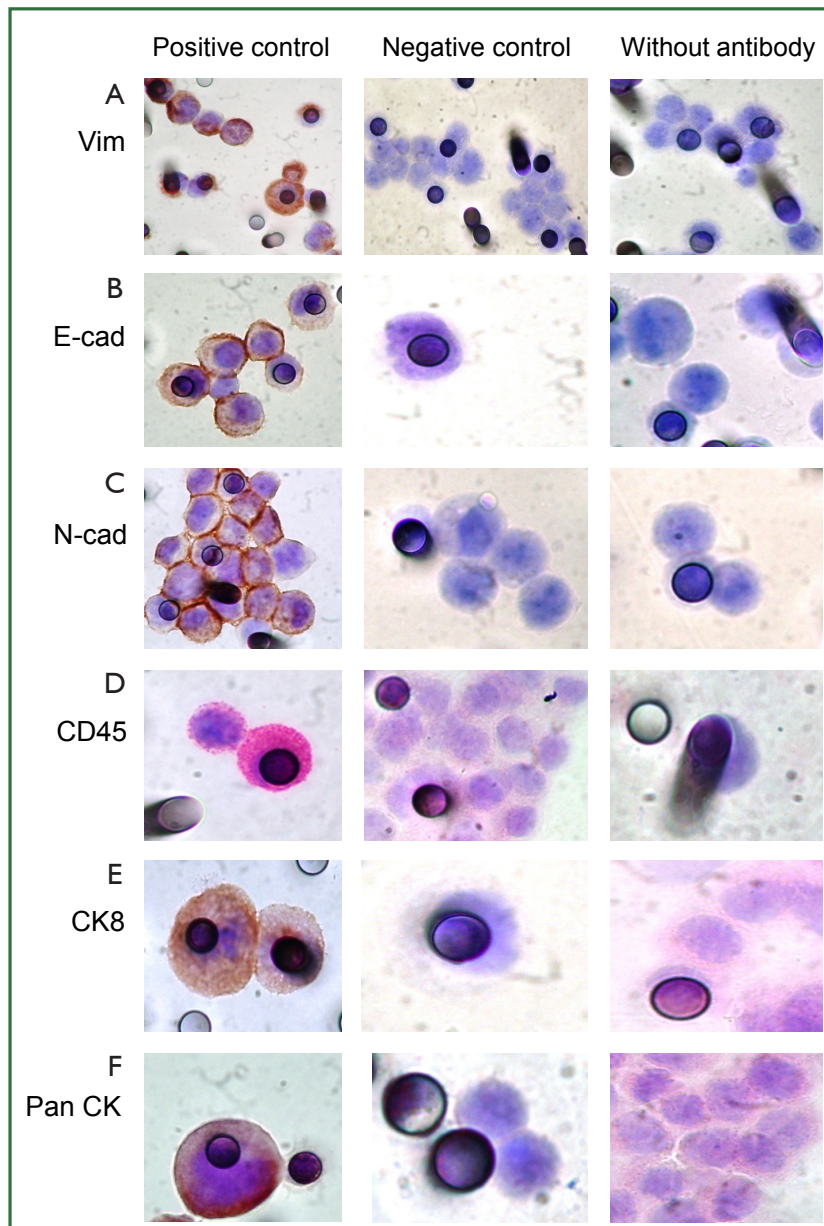
## References

1. Siegel R, Naishadham D, Jemal A. Cancer statistics, 2012. *CA Cancer J Clin* 2012;62:10-29.
2. Nadal R, Fernandez A, Sanchez-Rovira P, et al. Biomarkers characterization of circulating tumour cells in breast cancer patients. *Breast Cancer Res* 2012;14:R71.
3. Meng S, Tripathy D, Frenkel EP, et al. Circulating tumor cells in patients with breast cancer dormancy. *Clin Cancer Res* 2004;10:8152-62.
4. Khoja L, Backen A, Sloane R, et al. A pilot study to explore circulating tumour cells in pancreatic cancer as a novel biomarker. *Br J Cancer* 2012;106:508-16.
5. Hofman V, Long E, Ilie M, et al. Morphological analysis of circulating tumour cells in patients undergoing surgery for non-small cell lung carcinoma using the isolation by size of epithelial tumour cell (ISET) method. *Cytopathology* 2012;23:30-8.
6. Vona G, Sabile A, Louha M, et al. Isolation by size of epithelial tumor cells: a new method for the immunomorphological and molecular characterization of circulating tumor cells. *Am J Pathol* 2000;156:57-63.
7. Krebs MG, Hou JM, Sloane R, et al. Analysis of circulating tumor cells in patients with non-small cell lung cancer using epithelial marker-dependent and -independent approaches. *J Thorac Oncol* 2012;7:306-15.
8. Hofman V, Bonnetaud C, Ilie MI, et al. Preoperative circulating tumor cell detection using the isolation by size of epithelial tumor cell method for patients with lung cancer is a new prognostic biomarker. *Clin Cancer Res* 2011;17:827-35.
9. Ross JS, Slodkowska EA. Circulating and disseminated tumor cells in the management of breast cancer. *Am J Clin Pathol* 2009;132:237-45.
10. Ignatiadis M, Reinholz M. Minimal residual disease and circulating tumor cells in breast cancer. *Breast Cancer Res* 2011;13:222.
11. Therasse P, Arbuck SG, Eisenhauer EA, et al. New guidelines to evaluate the response to treatment in solid tumors. European Organization for Research and Treatment of Cancer, National Cancer Institute of the United States, National Cancer Institute of Canada. *J Natl Cancer Inst* 2000;92:205-16.
12. Hou JM, Krebs M, Ward T, et al. Circulating tumor cells as a window on metastasis biology in lung cancer. *Am J Pathol* 2011;178:989-96.

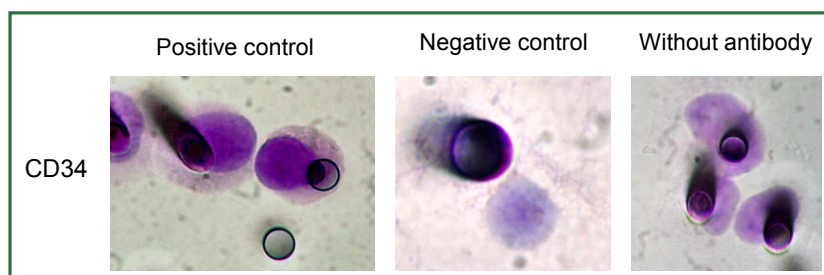
13. Christiansen JJ, Rajasekaran AK. Reassessing epithelial to mesenchymal transition as a prerequisite for carcinoma invasion and metastasis. *Cancer Res* 2006;66:8319-26.
14. Kalluri R, Weinberg RA. The basics of epithelial-mesenchymal transition. *J Clin Invest* 2009;119:1420-8.
15. Krebs MG, Sloane R, Priest L, et al. Evaluation and prognostic significance of circulating tumor cells in patients with non-small-cell lung cancer. *J Clin Oncol* 2011;29:1556-63.
16. Mego M, Mani SA, Cristofanilli M. Molecular mechanisms of metastasis in breast cancer--clinical applications. *Nat Rev Clin Oncol* 2010;7:693-701.
17. Agiostratidou G, Hulit J, Phillips GR, et al. Differential cadherin expression: potential markers for epithelial to mesenchymal transformation during tumor progression. *J Mammary Gland Biol Neoplasia* 2007;12:127-33.
18. Qi J, Chen N, Wang J, et al. Transendothelial migration of melanoma cells involves N-cadherin-mediated adhesion and activation of the beta-catenin signaling pathway. *Mol Biol Cell* 2005;16:4386-97.
19. Armstrong AJ, Marengo MS, Oltean S, et al. Circulating tumor cells from patients with advanced prostate and breast cancer display both epithelial and mesenchymal markers. *Mol Cancer Res* 2011;9:997-1007.
20. Bonnomet A, Syne L, Brysse A, et al. A dynamic in vivo model of epithelial-to-mesenchymal transitions in circulating tumor cells and metastases of breast cancer. *Oncogene* 2012;31:3741-53.
21. Maheswaran S, Sequist LV, Nagrath S, et al. Detection of mutations in EGFR in circulating lung-cancer cells. *N Engl J Med* 2008;359:366-77.



**Cite this article as:** Chinen LT, Carvalho FM, Rocha BMM, Aguiar CM, Abdallah EA, Campanha D, Mingues NB, Oliveira TB, Sampaio MM, Cervantes GM, Dettino AL, Soares FA, Paterlini-Br  chot P, Fanelli MF. Cytokeratin-based CTC counting unrelated to clinical follow up. *J Thorac Dis* 2013;5(5):593-599. doi: 10.3978/j.issn.2072-1439.2013.09.18



**Figure S1.** Immunocytochemistry reaction to antibodies to verify their specificity. (A,B) and (C). Blood from healthy individual spiked with A549 cells (positive control) and blood from the same individual spiked with HCT 116 cells (negative control) stained with vimentin, E-cadherin and N-cadherin respectively; (D) White blood cells from healthy individual (positive control) and tumor cell (HCT 116) spiked on healthy blood (negative control) stained with CD45; (E,F) Blood from healthy individual spiked with A549 cells (positive control) and white blood cells stained with CK 8 and pan-CK respectively. For all reactions, a spot obtained “without antibody” is shown.



**Figure S2.** Blood from healthy individual spiked with HUVEC cells (positive control) and white blood cells from the same individual (negative control) stained with CD34.