

EGFR expression in circulating tumor cells from high-grade Metastatic Sarcomas

Alexcia Camila Braun, Celso Abdon Lopes de Mello, Marcelo Corassa, Emne Ali Abdallah, Ana Cláudia Urvanegia, Vanessa Silva Alves, Bianca Troncarelli, Mônica Díaz, Ulisses Ribaldo Nicolau, Virgilio Souza e Silva, Vinicius Calsavara, Patrizia Paterlini-Brechót & Ludmilla Thomé Domingos Chinen

To cite this article: Alexcia Camila Braun, Celso Abdon Lopes de Mello, Marcelo Corassa, Emne Ali Abdallah, Ana Cláudia Urvanegia, Vanessa Silva Alves, Bianca Troncarelli, Mônica Díaz, Ulisses Ribaldo Nicolau, Virgilio Souza e Silva, Vinicius Calsavara, Patrizia Paterlini-Brechót & Ludmilla Thomé Domingos Chinen (2018): EGFR expression in circulating tumor cells from high-grade Metastatic Sarcomas, Cancer Biology & Therapy, DOI: [10.1080/15384047.2018.1433498](https://doi.org/10.1080/15384047.2018.1433498)

To link to this article: <https://doi.org/10.1080/15384047.2018.1433498>



Accepted author version posted online: 02 Feb 2018.



Submit your article to this journal [↗](#)



View related articles [↗](#)



View Crossmark data [↗](#)

Publisher: Taylor & Francis

Journal: *Cancer Biology & Therapy*

DOI: <https://doi.org/10.1080/15384047.2018.1433498>

Title: EGFR Expression in Circulating Tumor Cells from High-Grade Metastatic Sarcomas

Authors: Alexcia Camila Braun [1], Celso Abdon Lopes de Mello [2], Marcelo Corassa [2], Emne Ali Abdallah [1], Ana Cláudia Urvanegia [2], Vanessa Silva Alves [1], Bianca Troncarelli [1], Mônica Díaz [1], Ulisses Ribaldo Nicolau [2], Virgilio Souza e Silva [2], Vinicius Calsavara [1], Patrizia Paterlini-Brechôt [3], Ludmilla Thomé Domingos Chinen [1].

Affiliation:

[1] International Research Center; A. C. Camargo Cancer Center, São Paulo, SP 01508 010, Brazil

[2] Department of Clinical Oncology, A. C. Camargo Cancer Center, São Paulo, SP 01509 010, Brazil

[3] Faculté de Médecine Paris Descartes, Paris, 75006, France.

Short title: EGFR in CTCs from Sarcoma Patients

Corresponding author: Ludmilla Thomé Domingos Chinen, International Research Center; A. C. Camargo Cancer Center; Rua Taguá, 440 – São Paulo, 01508 010; phone: +55 (0)11 2189 2993; e-mail: ludmilla.chinen@cipe.accamargo.org.br

Article category: Research article

Conflict of interest: The authors have declared no conflicts of interest.

ABSTRACT

Introduction: Soft tissue Sarcomas (STS) are rare malignances, with high mortality rates. Half of patients develop metastasis. The presence of isolated Circulating Tumor Cells (CTCs) and Circulating Tumor Microemboli (CTM) in the blood may be early markers of tumor invasion. EGF family receptors can also influence this process. Objectives: to quantify CTCs and identify CTM as well as the EGFR protein expression in these cells and correlate with clinical outcome in metastatic STS.

Materials and methods: Approximately 8mL of blood was prospectively collected from patients with different types of high grade STS, before the beginning of chemotherapy. The samples were processed and filtered by ISET (Rarecells, France) for the isolation and quantification of CTCs and CTMs. EGFR expression was analysed by immunocytochemistry (ICC) on CTCs/ CTMs. **Results:** we analyzed 18 patients with median age of 49 years (18-77). The median CTCs number was 2.0 CTCs/mL (0-11 CTCs/mL) and CTM were found in 27.7% of patients. The positivity for EGFR in CTCs was observed in 83.3% of the patients. Progression-free survival (PFS) of positive EGFR staining compared to negative EGFR in CTCs was 2.2 months x NR (not reached) ($p = 0.117$). The PFS of first line patients with EGFR + CTCs was 2.2 months versus NR, for EGFR-

CTCs ($p = 0.156$). **Conclusions:** this is the first study to demonstrate the expression of EGFR protein in CTCs from sarcoma patients. Although our findings had not reach statistical significance, they could open an area for future investigation. The next step is to characterize CTCs in a larger cohort of patients to better understand the role of EGFR in promoting tumor metastasis in sarcoma.

Keywords: soft-tissue-sarcomas, circulating tumor cells, EGFR, circulating tumor microemboli.

INTRODUCTION

Soft Tissue Sarcomas (STS) are a heterogenous group of neoplasms. Originated from mesenchymal tissue, these tumors have different morphological pattern. (1). STS represent 1% of all cancers in adults and occur in fat, nerves, blood vessels, muscles and deep skin tissues (2). Despite the low incidence of these tumors, occurrence is more common in adolescents and young adults in comparison to other cancers, as a consequence, STS can harm individuals in their most productive period of life. STS are mainly treated and cured by surgery. Radiation therapy decreases the local recurrence chance. Adjuvant chemotherapy offers modest improvement in overall survival. Dissemination of STS occurs predominantly by angiovascular pathway. Lymph node metastasis is rare. The most frequent site of distant relapse is the lung.

Current methods to detect recurrence or metastasis in STS patients are radiological exams. Computed Tomography (CT) scan, Magnetic Resonance Imaging (MRI) and Positron Emission Tomography (PET) are the most used technologies and, in general, can detect disease in advanced stages or macrometastasis. However, these methods are limited by size, and are able to detect the presence of disease when the metastasis reaches 1 cm³ or higher (3).

The developing of new methods to early detection of recurrence and metastasis could change the manner STS are managed. Early detection of presence of tumor cells could impact the amount and even the type of systemic therapy for each individual patient.

The presence of isolated Circulating Tumor Cells (CTCs) and/or Circulating Tumor Microemboli (CTM) in the blood of patients may be early markers of tumor invasion and dissemination. It has been demonstrated that these cells circulate in the blood for months or years before the development of macro metastases (4) (3) (5). In contrast to carcinomas, few studies have examined the detection of CTCs and CTMs in sarcomas (6), due to the mesenchymal features of these tumors and the fact that the methods for detecting cells in the blood without epithelial markers are scarce. Most methods for detection of CTCs were initially developed and validated to detect carcinomas, by the use of epithelial markers to distinguish CTC from leucocytes. The “isolation by size of epithelial tumor cells” (ISET) technique, which consists on polycarbonate filters with circular pores of 8 µm diameter for CTC enrichment and cytological detection from blood samples, has been widely used. Some authors have addressed the high sensitivity and specificity of the method, and others have been comparing the ISET with

antibody-based methodologies, showing its higher sensitivity and specificity (7) (8).

Some clinical trials that included patients with carcinomas have demonstrated that the presence of malignant cells in the peripheral blood is associated with poor prognosis (9). However, only few studies have shown the prognostic role of CTM in solid tumors (colon, prostate, kidney, non-small cell lung cancer and head and neck) (10) (11) (12) (13) (14) (15) (16).

CTMs are clusters of two or more CTCs that can play an important role in metastatic process (17). CTMs provide a cell-cell adhesion advantage against shear stress in the blood stream and activate signaling for anti-apoptosis and protection from anoikis (14).

In addition to CTCs and CTMs, other factors influence the process of metastases such as expression of EGFR family receptors, expressed in various cell types including those of epithelial, mesenchymal and neuronal origin. This family of receptors includes Her1 (EGFR, ErbB1), Her2 (Neu, ErbB2), Her3 (ErbB3), and Her4 (ErbB4) (18). EGFR/ErbB signaling has been involved in cell proliferation, migration, motility and invasion of malignant cells (19). EGFR is overexpressed in many cancers, including HNSC (head and Neck Squamous Cell Carcinoma) and lung cancer, as well as in gastrointestinal tumors. Several studies evaluating the association between EGFR overexpression and survival rate have been reported. The increased in the tumoral EGFR protein expression is associated with reduced survival in solid tumors (20) (21) (22) (23). However, there are no studies about the expression of this protein in CTCs from sarcoma patients.

Therefore, the aim of this study was to evaluate the prognostic impact of CTCs and CTMs in sarcomas patients, and also to analyse EGFR protein expression in these cells and to correlate with outcome.

MATERIALS AND METHODS

Patients and samples

For the analysis of CTCs by the ISET[®] (Rarecells Diagnostics, Paris, France) peripheral blood samples were obtained from patients with metastatic STS before the beginning of chemotherapy. All patients were treated at the A.C. Camargo Cancer Center, São Paulo, Brazil and were included in this study between August 2015 and December 2016. Written informed consent was obtained from the patients prior to any test. This study was approved by the local Research Ethics Committee (CEP protocol 2081/15). Inclusion criteria were: age > 18 years old; one of the four high grade histology subtypes (synovial, pleomorphic, leiomyosarcoma and liposarcoma); first or second line of palliative chemotherapy; presence of metastatic disease detected by conventional imaging methods; performance status < 2; candidates to receive active chemotherapy regimens (anthracyclin and non-anthracyclin containing protocol). After accrual, patients were classified according to the line of treatment: first or second line. Blood sample collection was performed prior to the initiation of palliative chemotherapy.

The CTC and CTM were correlated with Progression Free Survival. Conventional response was assessed by RECIST criteria.

ISET assay

Blood samples were drawn in EDTA tubes (BD Vacutainer) with immediate gentle agitation after blood collection. If samples were not processed immediately after blood withdrawal, the tubes were left on a blood homogenizer at room temperature until processing within 4 hours after blood collection.

The ISET assay was performed as described previously (24). The samples were processed on platform as manufacturer's instructions. Eight mL of whole blood was diluted up to 80 mL with buffer containing 0.02% formaldehyde incubated for 10 min at room temperature and filtered through a membrane having 8 μ m pore size. To preserve cell integrity, the filtration pressure was optimized to -10 kPa. The membrane was then washed once with phosphate-buffered saline (PBS). After processing, filters were dried, wrapped in an aluminum sheet and stored frozen at -20 °C until use.

Immunocytochemistry

The spots membranes were submitted to dual color immunocytochemistry (ICC) (DAB+/Permanent Red; DakoTM) on 24

wells plate. Antigen retrieval was then performed using Antigen Retrieval Solution (Dako™). Cells were hydrated with tris-buffered saline (TBS) 1X for 20 min and permeabilized with TBS + Triton X-100 for 5 min and endogenous peroxides were blocked with 3% hydrogen peroxide in the dark for 15 min. The spots were incubated with antibodies diluted on TBS 10% fetal calf serum. To amplify the antibody signal, the spots were incubated with Envision G/2 Doublestain System, Rabbit/Mouse (Dako™) followed by 10 min of incubation with DAB+/Permanent Red; (Dako™). The spots were then washed with PBS between the steps. Cells were stained with hematoxylin and analyzed by light microscope (BX61-Olympus). To distinguish CTCs and CTMs from white blood cells, it was used anti-CD45 antibody (1:100 - CusaBio, Polyclonal antibody, Lot: G0227Y). CTCs were characterized based on the following criteria: negative staining for CD45, nucleus size $\geq 12 \mu\text{m}$, hyperchromatic and irregular nucleus, visible presence of cytoplasm, and a high nucleus–cytoplasm ratio (80%) (15). Cell clusters were considered as CTM if they contained three or more CTCs (25). EGFR antibody (1:100 - CusaBio Polyclonal antibody, Lot: C041A) was used to search for EGFR expression on CTCs and CTMs. Negative and positive controls were performed for each ICC staining. For negative controls, cell line A549 spiked in healthy blood was used as follow: by omitting the primary antibody, to ensure the exclusion of cross-reactivity; and by including the primary antibody, to guarantee the specificity of the antibody, as it is known that A549 do not express EGFR. For positive control we used FaDu cell line, which accordingly to The Human Protein Atlas (<http://www.proteinatlas.org/>) expresses EGFR protein. Both cell lines were acquired from ATCC® HTB-43™.

For EGFR expression analysis, cells were classified according to staining. No staining was considered negative and any staining was classified as positive.

Statistical analysis

For statistical analysis, a description of each group was performed according to clinical and pathologic characteristics. The determination of two groups of observations with respect to a cut-off was estimated using the maximum of the standardized log-rank statistic proposed by Lausen & Schumacher (26). The positivity ratio of EGFR was calculated using the number of EGFR-positive CTCs present on ISET membrane spot divided by the total CTCs present in the same spot. Progression free survival (PFS) was defined as the beginning of palliative chemotherapy and first detection of progression of the disease. It was obtained using the Kaplan-Meier method and the difference between curves was compared using the log-rank method. The PFS was correlated to EGFR staining and line of treatment. The Statistical analysis was performed using SPSS software for Windows, version 15. The *p* value was considered significant if ≤ 0.05 .

RESULTS

A total of 18 patients were included in this study. Clinical and pathological characteristics were obtained from medical records and are summarized in **Table 1**. There were 10 male and 8 female patients, with median age of 49.3 years (18-77 years). There were included 7 synovial sarcoma (38.8%), 5 pleomorphic sarcoma (22.2%), 4 leiomyosarcoma (27.7%), one liposarcoma (5.5%). One patient initially diagnosed as leiomyosarcoma was, in fact, better classified as rhabdomyosarcoma after pathologic review.

Regarding systemic treatment, 10 patients received first line chemotherapy to treat metastatic disease and 8 patients received second

or third line chemotherapy. The combination of Antracyclin (Doxorubicin or Epirubicin) plus Ifosfomide was used in three patients in first line and none in second and third line. Gemcitabine + Docetaxel were used as second line in two patients. Regimens and lines of treatment are summarized in **Table 2**.

CTCs were detected in 17 patients (94.4%). The median number of CTCs detected by ISET[®] in these patients was 2.0 CTC/mL (0-11 CTCs/mL). CTMs were found in 5 patients (27.7%). CTCs and CTMs are shown in **Figure 1**. Patients treated in first line had a median count of 1.93 CTC/ml and 1.62 CTC/ml in second or third line chemotherapy.

Three patients that underwent resection of primary tumor and metastasis were excluded from the statistical analysis of PFS. The median PFS of the remaining 15 patients was 7.7 months (0-11.0 months).

We classified patients as positive and negative for CTM. Although patients with positive CTM in the blood had inferior median PFS time (5.0 months versus not reached; $p = 0.724$) in relation to those without CTM, it was not statistically significant (**Table 2**).

We hypothesized that patients in first line had low CTCs count. Based on this, we analyzed the first-line patients separately and established the cut off level of 1 CTC per ml for positivity and absence of CTC as negative. We observed that patients with presence of CTCs had inferior median PFS, when compared to those with absence of these cells, but without statistical significance ($p = 0.317$).

Fifteen out of 18 patients had CTC stained for EGFR. The positivity ratio of EGFR expression in CTCs was 83.33%, but none of the CTM stained for EGFR. EGFR was negative in 3 patients with synovial sarcoma subtype. We established a cut-off for EGFR expression in CTCs and classified patients as positive and negative for its expression using the maximum of the standardized log-rank statistic proposed by Lausen and Schumacher (1992) ($> 83\%$ of expression = positive; $\leq 83\%$ of

expression= negative). We calculated PFS only for the 15 patients not submitted to surgery. The PFS of patients with positive EGFR compared to negative ones was 2.2 months x NR (not reached) ($p = 0.117$). We also analyzed the expression of EGFR in first-line patients. The PFS of first line patients with EGFR + CTCs was 2.2 months versus NR, for EGFR- CTCs ($p = 0.156$). Although without reaching statistical significance, the curves are clearly separated, indicating a possible correlation of EGFR expression in CTCs with poor prognosis (**Table 2 and Figure 2**).

DISCUSSION

Sarcomas are considered relatively rare neoplasms. Despite the poor prognosis of these neoplasms, there are few studies evaluating the role of liquid biopsy and correlating with outcome. Recently, Nicolazzo & Gradilone reported the difficulty found in the detection of CTC and also mentioned the importance of these cells for STS patients, opening a new scenario for research and improvement in the management of patients with sarcomas. (27). Previously, we have reported that isolation, detection, and characterization of CTCs from the blood of patients with STS is feasible using a size-based/cytopathological approach instead of polymerase chain reaction (PCR)-based molecular tests. (24). Moreover, in this study, our group also showed the sensitivity and specificity of ISET, by counting the cells of culture lineage before filtering and testing blood from healthy patients.

In the present study, we used ISET to search for CTCs from patients with metastatic sarcoma, to detect the presence of CTM and the expression of EGFR protein in CTCs/CTM. The high detection of CTCs in metastatic STS patients (94.4%) found here are promising, considering the difficulty in the follow up of patients with this disease.

The presence of CTCs and CTM and their relation to tumor progression have been observed in some studies, such as small-cell lung cancer and metastatic melanoma, showing their relation to poor prognosis (14) (28). We observed CTM in 5 patients with a detection rate of 27,7%.

The detection of CTMs were correlated to poor outcome in metastatic breast cancer and metastatic castration-naïve prostate cancer and by using another method, it was shown that CTM represents around 2 to 5% of CTCs (29) (30).

Using ISET, Hou *et al*/demonstrated that 26% of patients with small cell lung cancer have CTM, a percentage similar to our results with STS (27.7%) (14). Although CTM have not the same magnitude in prognosis such as CTC, these authors found that the cell clusters were correlated to poor PFS. Patients with CTM had median PFS of 4.6 months, compared to those with no CTMs with 8.2 months. Our findings are also in agreement with a study by Long *et al.*, with metastatic melanoma patients (28). CTCs were detected in 85% of their patients, 34% with 2 to 6 CTMs. Overall Survival (OS) was significantly worse in patients with CTMs, independently of the therapeutic strategy ($p < 0.001$ for dacarbazine-treated patients and $p = 0.0064$, for dacarbazine plus vemurafenib -treated patients).

Our study is the first to explore the presence of EGFR protein in CTCs from patients with STS. The positivity for EGFR protein in CTCs was observed in 83.33% of the patients (15 of 18).

EGFR expression is a strong prognostic feature in multiple solid tumor types, targeting EGRF is a strong therapeutic option for the treatment of many tumors currently. (31). However, the role of EGFR in sarcoma is still unclear. In a study conducted by Sato *et al.*, the authors analyzed the expression of epidermal growth factor receptor (EGFR) in

formalin-fixed primary tumor of 281 patients with STS and observed positive staining in 168 of 281 (60%) patients (32). The overexpression of EGFR was significantly associated with histologic grade ($p=0.001$). Moreover, stratified log-rank test revealed that there was a correlation between EGFR overexpression and histologic grade (32). Yang et al., found promising results in STS tissues, as EGFR was expressed in 36/46 of STS samples distributed among different histological types (33).

In a recent study, Sannino, et al., suggested that certain sarcoma subtypes reside in a “metastable” state characterized by the expression of both epithelial and mesenchymal features. They proposed that certain sarcoma subtypes can suffer EMT/MET-related processes and that the activation of EMT/MET-related programs can lead to reversible phenotypic changes with specific stimuli. (34). Moreover, they described that “metastable” phenotype may allow individual tumor cells to acquire the characteristics of more differentiated epithelial or mesenchymal cells and the molecular heterogeneity could lead to highly aggressive clinical behavior in sarcomas patients because the entire tumor will take advantage of both the EMT- and MET related biological features.

The epithelial-to-mesenchymal transition (EMT) is a reversible process, where epithelial cells reduce their intercellular adhesions and proliferative capacity while gaining a mesenchymal phenotype with migratory and invasive properties (34). The potential existence of EMT-related process in sarcomas allow them to be mesenchymal or epithelial under specific conditions, which likely has important clinical implications. EGFR is a key factor in epithelial malignancies, and its activity enhances tumor growth, invasion, and metastasis (38). We believe that our findings with the EGFR protein reinforce the idea of EMT process in CTCs from sarcoma patients and its interference on the metastatization process. As the expression of EGFR by tumors typically confers a more aggressive phenotype (39), we believe that the same process occurs in CTCs from sarcoma, since these cells undergo numerous transformations along their trajectory.

The absence of EGFR expression on CTMs needs to be deeply explored. We believe that the protection conferred by the microembolus structure inhibits the initiation of the EGFR expression. Within the CTM structure, CTCs are no longer exposed to external factors, such as cytokines (which may be involved in EGFR expression) while being protected by host cells, such as endothelial cells, neutrophils, monocytes, and platelets, which can add protection against external agents and another immune system-related cells into blood circulation.

Considering that the main treatment to STS is surgical removal, and that these tumors are difficult to treat with chemotherapy, our results are encouraging and point new target for sarcoma treatment. We hypothesized that EGFR expression by CTCs of non-epithelial tumors can explain the process of invasion and dissemination. Maybe, in the future, targeting EGFR positive CTC from STS origin could translate in clinical benefit for some patients.

CTCs, CTM and EGFR expression in these cells can be used as tools to measure the effectiveness of treatment and also better select patients for clinical intervention. Studies with a larger cohort of patients, with well-defined treatment and follow up are necessary to confirm our data and to evaluate the role of CTC, CTM and EGFR expression for STS patients, as well as the clinical impact of our findings

REFERENCES

1. Singer S, Demetri GD, Baldini EH, Fletcher CD. Management of soft-tissue sarcomas: an overview and update. *Lancet Oncol.* 2000 Oct;1:75–85.
2. Mackall CL, Meltzer PS, Helman LJ. Focus on sarcomas. *Cancer Cell.* 2002 Sep;2(3):175–8.
3. Klein CA. Parallel progression of primary tumours and metastases. *Nat Rev Cancer.* 2009;9(4):302–12.

4. Paterlini-Brechot P, Benali NL. Circulating tumor cells (CTC) detection: clinical impact and future directions. *Cancer Lett.* 2007 Aug 18;253(2):180–204.
5. Rhim AD, Mirek ET, Aiello NM, Maitra A, Bailey JM, McAllister F, et al. EMT and dissemination precede pancreatic tumor formation. *Cell.* 2012 Jan 20;148(1–2):349–61.
6. Chang L, Asatryan G, Dry SM, James AW. Circulating tumor cells in sarcomas: a brief review. *Med Oncol Northwood Lond Engl.* 2015 Jan;32(1):430.
7. Vona G, Sabile A, Louha M, Sitruk V, Romana S, Schütze K, et al. Isolation by Size of Epithelial Tumor Cells. *Am J Pathol.* 2000 Jan;156(1):57–63.
8. Khoja L, Backen A, Sloane R, Menasce L, Ryder D, Krebs M, et al. A pilot study to explore circulating tumour cells in pancreatic cancer as a novel biomarker. *Br J Cancer.* 2012 Jan 31;106(3):508–16.
9. Lucci A, Hall CS, Lodhi AK, Bhattacharyya A, Anderson AE, Xiao L, et al. Circulating tumour cells in non-metastatic breast cancer: a prospective study. *Lancet Oncol.* 2012 Jul;13(7):688–95.
10. Knisely WH, Mahaley MS. Relationship between size and distribution of spontaneous metastases and three sizes of intravenously injected particles of VX2 carcinoma. *Cancer Res.* 1958 Sep;18(8 Part 1):900–5.
11. Brandt B, Junker R, Griwatz C, Heidl S, Brinkmann O, Semjonow A, et al. Isolation of prostate-derived single cells and cell clusters from human peripheral blood. *Cancer Res.* 1996 Oct 15;56(20):4556–61.
12. Molnar B, Ladanyi A, Tanko L, Sréter L, Tulassay Z. Circulating tumor cell clusters in the peripheral blood of colorectal cancer patients. *Clin Cancer Res Off J Am Assoc Cancer Res.* 2001 Dec;7(12):4080–5.
13. Kats-Ugurlu G, Roodink I, de Weijert M, Tiemessen D, Maass C, Verrijp K, et al. Circulating tumour tissue fragments in patients with pulmonary metastasis of clear cell renal cell carcinoma. *J Pathol.* 2009 Nov;219(3):287–93.
14. Hou J-M, Krebs MG, Lancashire L, Sloane R, Backen A, Swain RK, et al. Clinical significance and molecular characteristics of

circulating tumor cells and circulating tumor microemboli in patients with small-cell lung cancer. *J Clin Oncol Off J Am Soc Clin Oncol*. 2012 Feb 10;30(5):525–32.

15. Krebs MG, Hou J-M, Sloane R, Lancashire L, Priest L, Nonaka D, et al. Analysis of circulating tumor cells in patients with non-small cell lung cancer using epithelial marker-dependent and -independent approaches. *J Thorac Oncol Off Publ Int Assoc Study Lung Cancer*. 2012 Feb;7(2):306–15.
16. Fanelli MF, Oliveira TB, Braun AC, Corassa M, Abdallah EA, Nicolau UR, et al. Evaluation of incidence, significance, and prognostic role of circulating tumor microemboli and transforming growth factor- β receptor I in head and neck cancer. *Head Neck*. 2017 Aug 17;
17. Chen J-Y, Tsai W-S, Shao H-J, Wu J-C, Lai J-M, Lu S-H, et al. Sensitive and Specific Biomimetic Lipid Coated Microfluidics to Isolate Viable Circulating Tumor Cells and Microemboli for Cancer Detection. *PloS One*. 2016;11(3):e0149633.
18. Lemmon MA, Schlessinger J. Cell signaling by receptor tyrosine kinases. *Cell*. 2010 Jun 25;141(7):1117–34.
19. Egloff AM, Grandis JR. Targeting epidermal growth factor receptor and SRC pathways in head and neck cancer. *Semin Oncol*. 2008 Jun;35(3):286–97.
20. Lee CS, Redshaw A, Boag G. Epidermal growth factor receptor immunoreactivity in human laryngeal squamous cell carcinoma. *Pathology (Phila)*. 1997 Aug;29(3):251–4.
21. Grandis JR, Chakraborty A, Zeng Q, Melhem MF, Tweardy DJ. Downmodulation of TGF- α protein expression with antisense oligonucleotides inhibits proliferation of head and neck squamous carcinoma but not normal mucosal epithelial cells. *J Cell Biochem*. 1998 Apr 1;69(1):55–62.
22. Adjei AA, Rowinsky EK. Novel anticancer agents in clinical development. *Cancer Biol Ther*. 2003 Aug;2(4 Suppl 1):S5-15.
23. Hynes NE, Lane HA. ERBB receptors and cancer: the complexity of targeted inhibitors. *Nat Rev Cancer*. 2005 May;5(5):341–54.
24. Chinen LTD, Mello CAL, Abdallah EA, Ocea LM, Buim ME, Breve NM, et al. Isolation, detection, and immunomorphological

characterization of circulating tumor cells (CTCs) from patients with different types of sarcoma using isolation by size of tumor cells: a window on sarcoma-cell invasion. *OncoTargets Ther.* 2014;7:1609–17.

25. Khoja L, Shenjere P, Hodgson C, Hodgetts J, Clack G, Hughes A, et al. Prevalence and heterogeneity of circulating tumour cells in metastatic cutaneous melanoma: *Melanoma Res.* 2014 Feb;24(1):40–6.
26. Lausen B, Schumacher M. Maximally Selected Rank Statistics. *Biometrics.* 1992 Mar;48(1):73.
27. Nicolazzo C, Gradilone A. Significance of circulating tumor cells in soft tissue sarcoma. *Anal Cell Pathol Amst.* 2015;2015:697395.
28. Long E, Ilie M, Bence C, Butori C, Selva E, Lalvée S, et al. High expression of TRF2, SOX10, and CD10 in circulating tumor microemboli detected in metastatic melanoma patients. A potential impact for the assessment of disease aggressiveness. *Cancer Med.* 2016;5(6):1022–30.
29. Aceto N, Bardia A, Miyamoto DT, Donaldson MC, Wittner BS, Spencer JA, et al. Circulating tumor cell clusters are oligoclonal precursors of breast cancer metastasis. *Cell.* 2014 Aug 28;158(5):1110–22.
30. Carlsson A, Nair VS, Luttgen MS, Keu KV, Horng G, Vasanawala M, et al. Circulating tumor microemboli diagnostics for patients with non-small-cell lung cancer. *J Thorac Oncol Off Publ Int Assoc Study Lung Cancer.* 2014 Aug;9(8):1111–9.
31. Nicholson RI, Gee JM, Harper ME. EGFR and cancer prognosis. *Eur J Cancer Oxf Engl 1990.* 2001 Sep;37 Suppl 4:S9-15.
32. Sato O, Wada T, Kawai A, Yamaguchi U, Makimoto A, Kokai Y, et al. Expression of epidermal growth factor receptor, ERBB2 and KIT in adult soft tissue sarcomas: a clinicopathologic study of 281 cases. *Cancer.* 2005 May 1;103(9):1881–90.
33. Yang J-L, Hannan MT, Russell PJ, Crowe PJ. Expression of HER1/EGFR protein in human soft tissue sarcomas. *Eur J Surg Oncol J Eur Soc Surg Oncol Br Assoc Surg Oncol.* 2006 May;32(4):466–8.

34. Sannino G, Marchetto A, Kirchner T, Grünewald TGP. Epithelial-to-Mesenchymal and Mesenchymal-to-Epithelial Transition in Mesenchymal Tumors: A Paradox in Sarcomas? *Cancer Res.* 2017 Sep 1;77(17):4556–61.

FIGURE LEGENDS

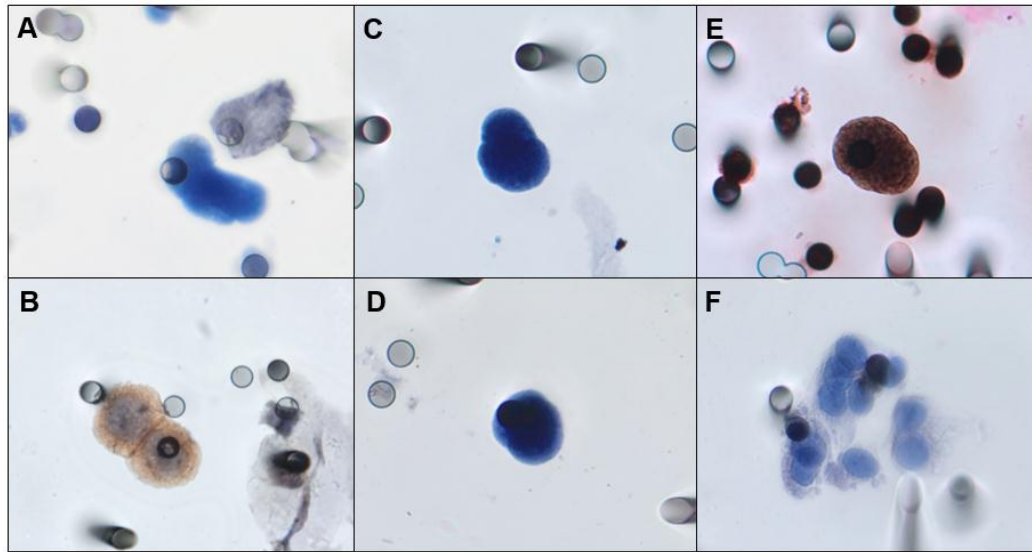


Figure 1: **A)** Negative control, A-549 cell line “spiked” in healthy blood and negative for EGFR. **B)** Positive control, FaDu cell line “spiked” in healthy blood and stained for EGFR. **C, D)** Examples of an isolated CTC of sarcoma patient with cytomorphological features (negative staining for CD45, nucleus size ≥ 12 μm , hyperchromatic and irregular nucleus, visible presence of cytoplasm, and a high nucleus–cytoplasm ratio (Krebs, *et al.*, 2012)¹⁵. **E)** Immunocytochemistry of CTC with anti-EGFR antibody and counterstaining with DAB. **F)** One CTM from STS patient observed in the blood filtered using the ISET.

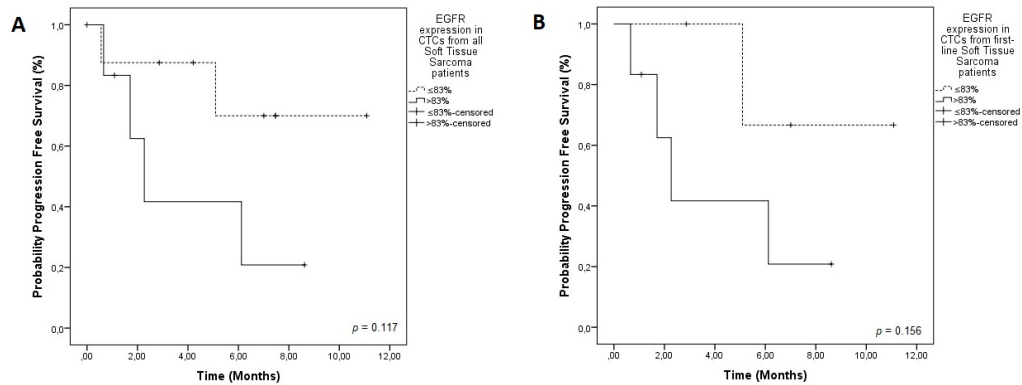


Figure 2. PFS in relation to EGFR staining on CTCs from sarcoma patients. A) PFS of all patients included. EGFR expression in STS patients ($> 83\%$ = positive EGFR staining on CTCs 2.2 months); $\leq 83\%$ = negative EGFR staining on CTCs (NR) ($p = 0.117$). **B) PFS including only patients treated in first line.** EGFR + CTCs was 2.2 months versus NR, for EGFR- CTCs ($p = 0.156$).

Notes: Dotted line: patients without expression of EGFR. Continuous line: patients with expression of EGFR. NR = not reached

Table 1. Sarcoma patients' clinic-pathological characteristics

Variable	Nº.	%
Total number of patients	18	100
Age at entry study, years		
Median (range)	49.33 (18-77)	
Gender		
Male	10	55.55
Female	8	44.44
Histological subtype		
Synovial Sarcoma	7	38.88
Leiomyosarcoma	5	27.77
Pleomorphic Sarcoma	4	22.22
Liposarcoma	1	5.55
Rhabdomyosarcoma	1	5.55
Progression of disease after CTC collection		
No	9	50
Yes	9	50
Median CTC/mL number (range)	2.0 (0 -11.0)	
CTM baseline		
No	13	72.22
Yes	5	27.77

Table 2. Patients' treatment, outcome and CTCs counting and characterization.

Patient ID	Histological subtype	Positivity ratio EGFR	Number of EGFR positive CTCs in 1ml of blood	Number of EGFR negative CTCs in 1ml of blood	CTC/1ml	CT M	Collection before the first-line treatment	Treatment received after CTC collection	Line of treatment
1	Pleomorphic Sarcoma	1	4	0	1.25	-	Yes	Gemcitabine + Docetaxel	1 st
2	Rhabdomyosarcoma	1	3	0	1	-	Yes	Ifosfamide + Doxorubicin	1 st
3	Liposarcoma	1	5	0	11.25	+	Yes	Doxorubicin Monotherapy	1 st
4	Synovial Sarcoma	0,7	5	1	4	+	Yes	Ifosfamide + Etoposide	1 st
5	Pleomorphic Sarcoma	1	2	0	4.5	+	Yes	Epirubicin + Ifosfamide	1 st
6*	Leiomyosarcoma	1	1	0	0.75	-	No	Ifosfamide + Etoposide	2 nd
7*	Pleomorphic Sarcoma	0,1	2	12	6.25	+	No	Dacarbazine + Gemcitabine	3 rd
8	Leiomyosarcoma	0,8	5	1	2	-	Yes	Ifosfamide + Doxorubicin	1 st

								bicin	
9*	Leiomyosarc oma	0,3	1	2	0.75	-	No	Doxorru bicin + Dacarba zine	2 nd
10	Synovial Sarcoma	0	0	7	2	-	No	Ifosfami de	2 nd
11	Synovial Sarcoma	1	2	0	1	-	Yes	Epirubici n + Ifosfami de	1 st
12	Leiomyosarc oma	1	1	0	0.93	-	Yes	Dacarba zine Monoth erapy	1 st
13	Synovial Sarcoma	-	-	-	0	-	Yes	Ifosfami de + Doxorru bicin	1 st
14	Synovial Sarcoma	0,5	1	1	1.87	-	No	Ifosfami de	2 nd
15	Leiomyosarc oma	0,5	2	2	9.6	-	No	Epirubici n + Ifosfami de	2 nd
16	Synovial Sarcoma	-	-	-	0	-	No	Ifosfami de	3 rd
17	Synovial Sarcoma	0,5	2	2	5	+	Yes	Epirubici n + Ifosfami de	1 st
18	Pleomorphic Sarcoma	0,5	2	2	5.66	-	No	Doxorru bicin	2 nd

Positivity Ratio: The positivity ratio of EGFR was calculated as the number of EGFR-positive CTCs present on ISET membrane spot divided by the total CTCs present in the same spot.

CTC count per mL of blood: CTCs were counted in four spots of the membrane, which corresponds to 4 mL blood. After counting we calculated the mean of these four spots to obtain the amount of CTCs per1 mL of blood, according to Krebs et al. (2012)¹⁵.

* patients that underwent resection of primary tumor and metastasis in first line treatment were excluded from the analysis